





Easy Elegance

Dazzling lights and detailed cabinetry add glamour to the kitchen.

BY ANN WILSON | PHOTOS ANTHONY-MASTERTSON
FIELD EDITOR ANNA FORKUM

Glitzy chandeliers, intricately detailed cabinets, and an interplay of dark and light surfaces bring the appeal of a finely furnished room to this new Kentucky kitchen.



After years of kitchen-related reveries, Sarah Jones—lover of everything design-related—realized her romantic vision in the new home she and her husband, Chuck, built on an acreage in Murray, Kentucky.

“Even as a kid, I had a scrapbook filled with house things and magazine pages,” Sarah says. “For years, I looked at Clive Christian cabinetry ads and magazine features with absolute lust. The cabinets have a glamorous edge but are still rooted in tradition; I always hoped I could use them in my home someday.”

Sarah did a little research and came across Atlanta kitchen designer Heather Hungeling, who specializes in high-end kitchens that incorporate Clive Christian designs. Hungeling reworked an architectural plan the couple purchased to create a custom kitchen to suit their family’s needs.

By moving the eating area on the original plan to an enclosed screen porch, the kitchen doubled

Opposite: Prettyly hued china contributes elegant shine and pops of color that draw attention to open shelves and glass-front cabinets. Detailed moldings and trimwork highlight the cabinets’ furniturelike design. **Above right:** Dripping with black crystals, a pair of prismatic Clive Christian chandeliers make a glamorous statement.

Right: Kitchen designer Heather Hungeling placed two windows on the room’s exterior wall to bring in light and frame views from two farmhouse sinks, which expand the room’s rural charm and modern utility.





“The finishes and architectural elements give it an old-world look that makes me think of homes in Charleston or Savannah.”

Sarah Jones
homeowner

in size, enabling an open, breezy feel. “When it came to style, Sarah wanted an airy white kitchen with classic architectural details that made the kitchen look as if it had been around for a while,” Hungeling says.

Sarah credits Hungeling with helping hone her design vision for the kitchen. “The hardest part was narrowing down the options,” Sarah says. “You know you want certain amenities, but unless you have a kitchen the size of a football field, you have to choose between things. Heather helped me prioritize and determine where and how I could use the various assets of the kitchen.”

Sarah’s edited wish list included a Southern-influenced space with lots of attractive storage that is “super organized,” she says, and a large island that accommodates the couple’s two children, extended family, and friends, as well as Sarah’s baking endeavors.

“We redrew that island a few times,” Sarah says. “I particularly wanted those circle details that I had seen in a magazine. The island works great: There’s space for setting out buffets for eight to 20 guests or for the kids to do their homework while I’m cooking.”

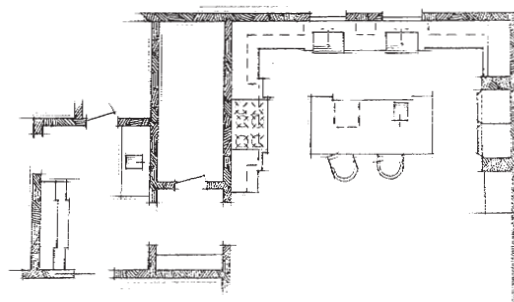
The island, which operates as the kitchen’s hub, also houses a prep sink, refrigerator drawers,



and pop-up shelves that support a stand mixer and food-prep equipment. Cabinets framing the paneled refrigerator and freezer corral small appliances and host a breakfast-making station. Two farmhouse sinks line up beneath windows to amplify both the room’s character and convenience.

Materials and surfaces were selected to showcase the cabinetry’s details. Understated

Opposite: This doorway connects the kitchen to a pantry and a butler’s pantry situated off the dining room. The island’s circular motif repeats in the transom window above the doorway. **Above:** Gray glaze applied atop a hand-brushed white-painted finish settles in cabinet and corbel recesses to add depth to the details.







white subway tiles, rich gray walls, dark-stained walnut floors, and black granite countertops allow the cabinets to shine. Two of the room's most stunning features—a pair of dazzling chandeliers and the island's wenge-wood top—were chosen by Chuck when he visited the cabinetmaker's showroom while on a business trip to New York.

"Those were the two things he liked," Sarah says. "And they've become my favorites, too. The wood is rich and warm, and the black-crystal chandeliers are very cool, contrasting nicely with the crisp white cabinets."

It's these high-drama contrasts—between white and black, prismatic and hand-painted, and old and new—that keep interest running high in this sophisticated space.

"I've always been attracted to a cross between tradition and glamour," Sarah says. "The kitchen feels warm though the colors are cool. It's homey but in a glamorous way."

RESOURCES BEGIN ON PAGE 122.

Opposite: Paneled doors blend the refrigerator into the timeless scheme. Stained poplar box beams and white-painted maple boards add old-timey texture to the 11-foot-high ceilings. **Above:** Situated to the right of the refrigerator, this breakfast station sports pocket doors that disappear into cabinets to allow unlimited access to coffee and cups. **Above right:** Corbel-detailed bookcases flanking the seating recess make the wenge-wood-topped island appear light on its feet.

DESIGNER INSIGHTS

Making White Work

"I really think this represents the white kitchen of the future," designer Heather Hungeling says of the new kitchen she designed for homeowners Sarah and Chuck Jones. "It shows how you can make white kitchens interesting and fun." Hungeling and Sarah share their tips for creating white kitchens that captivate.

- **Introduce details.** Carry substantial architectural details used elsewhere in your house into your kitchen. Deep moldings, ornate columns, and refined or rustic ceiling beams upgrade kitchens from ho-hum work zones to fabulously furnished spaces.
- **Shift shades.** Apply subtle glazing treatments to white-painted cabinets to differentiate them from a room's brighter white finishes.
- **Play with patterns.** Sarah says white kitchens are the perfect settings for introducing large-pattern window treatments, tablecloths, and place mats.
- **Master the mix.** Blend polished and honed surfaces for a tantalizing interplay of textures. Bring in natural woods as beams and countertops to warm up too-airly spaces.
- **Accent with color.** Choose just one or two deep, saturated, or bright colors that complement each other but create high-contrast drama when paired with white surfaces and finishes.
- **Stage a few surprises.** Use crystal chandeliers, gleaming silver serving pieces, and your finest china to ignite interest in hardworking spaces.